

MICROCENTRIFUGE

MPW-55 No 10055



Registered No: PL/DR 013058

APPLICATION

MPW-55 is a laboratory microcentrifuge. Its structure guarantees easy service, safe work and wide range of applications in medical, biochemical and other laboratories where it is necessary to separate small quantities of investigated material into components of different density.

ADVANTAGES

- durable, maintenance-free induction motor;
- microprocessor controller of speed and time provides high repeatability of results;
- programming of rotational speed or RCF, time, characteristics of acceleration and deceleration;
- digital readout of set and actual parameters on LCD display;
- selection of 9 operating programs; selection of 3 characteristics of acceleration and deceleration;
- spinning in "short" mode (the centrifugation time controlled by pressing the pushbutton);

Safety features:

- it is not possible to start, when the lid is open;
- it is not possible to open the lid during spinning.

Product according to international safety regulations EN-61010-1 and EN-61010-2-020.

TECHNICAL DATA

- Electric supply 230 V 50/60 Hz
option 110 V 50/60 Hz
- Power consumption 90 W
- Max. capacity 52.8 ml
- Range of rotational speed 300-14000 rpm
- Max. RCF 14243xg
- Time 0-99 min
- Dimensions:
 - Depth 270 mm
 - Width 220 mm
 - Height 180 mm
- Weight without accessories 5 kg



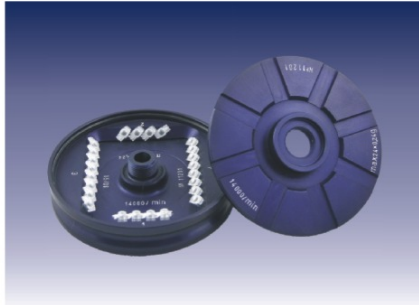
- Certified Management System
- DIN EN ISO 9001
- DIN EN ISO 13485

MPW Med. instruments

46 Boremlowska Str, 04-347 Warsaw, Poland
phone (+48 22) 673 04 08, 879 70 46
fax (+48 22) 610 55 36, 610 81 01
e-mail: mpw@mpw.pl, www.mpw.pl



LIST OF ACCESSORIES FOR LABORATORY CENTRIFUGE MPW-55



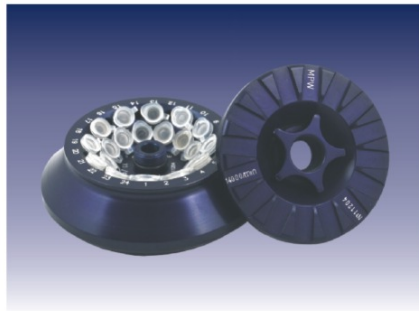
angle rotor 2x8x0.2 ml + 2x4x0,2 ml
No 11201
with hermetic sealed lid
Max. speed 14000 rpm, RCF 12271xg
Max. radius R = 5.6 cm
angle 45°
Tubes 0.2 ml No 15125



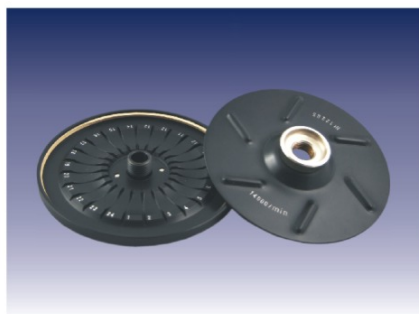
angle rotor 12x2.2/1.5 ml
No 11202
with hermetic sealed lid
Max. speed 14000 rpm, RCF 14243xg
Max. radius R = 6.5 cm
angle 45°
Tubes 2.2 ml No 15123



angle rotor 18x0.5 ml
No 11203
with hermetic sealed lid
Max. speed 14000 rpm, RCF 12928xg
Max. radius R = 5.9 cm
angle 45°
Tubes 0.5 ml No 15127



angle rotor 24x2.2/1.5 ml
No 11204
with hermetic sealed lid
Max. speed 14000 rpm, RCF 14243xg
Max. radius R = 6.5 cm
angle 45°
Tubes 2.2 ml No 15123



Hematocrit rotor 24 capillaries 50 mm
No 12205
Max. speed 14000 rpm, RCF 13586xg
Max. radius R = 6.2 cm
Glass capillary 50 mm
19 µl No 15101

Authorised Distributor: