



BIG FISH

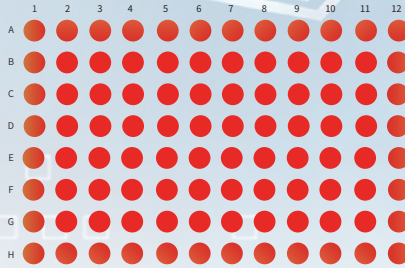
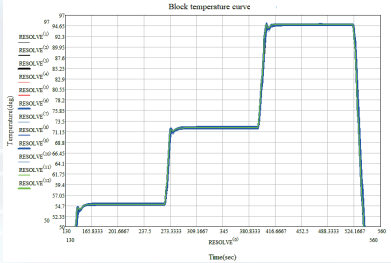
Hangzhou Bigfish Bio-tech Co., Ltd.

Thermal cycler



WeChat

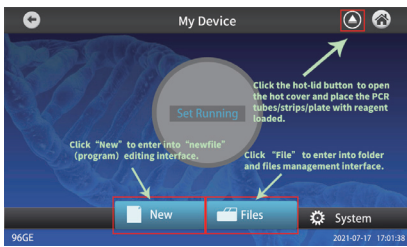
Product Features



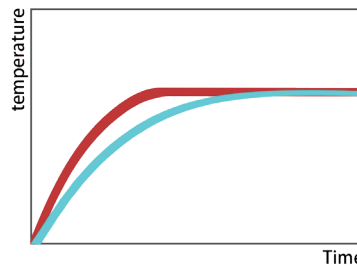
Fast ramping rate: maximum to 5.5°C/s, saving valuable experimental time

Stable temperature control: industrial semiconductor temperature control system leads to accurate temperature control and great uniformity between wells

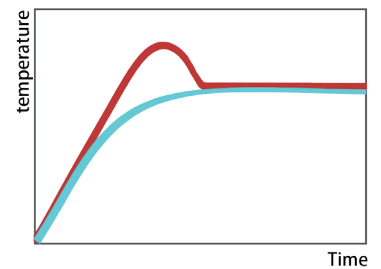
Various functions: flexible program setting, adjustable time, temperature gradient, and temperature change rate, built-in Tm calculator



Block temperature
Sample temperature



BLOCK mode



TUBE mode

Easy to use: Built-in graph-text quick operation guide, suitable for operators with various backgrounds

Dual-mode temperature control: TUBE mode automatically simulates the actual temperature in the tube according to the reaction volume, which makes the temperature control more accurate; The BLOCK mode directly displays the temperature of the metal block, applicable to the small volume reaction system, and takes shorter time in same program

Software Interface



Product Comparison



FC-96GE

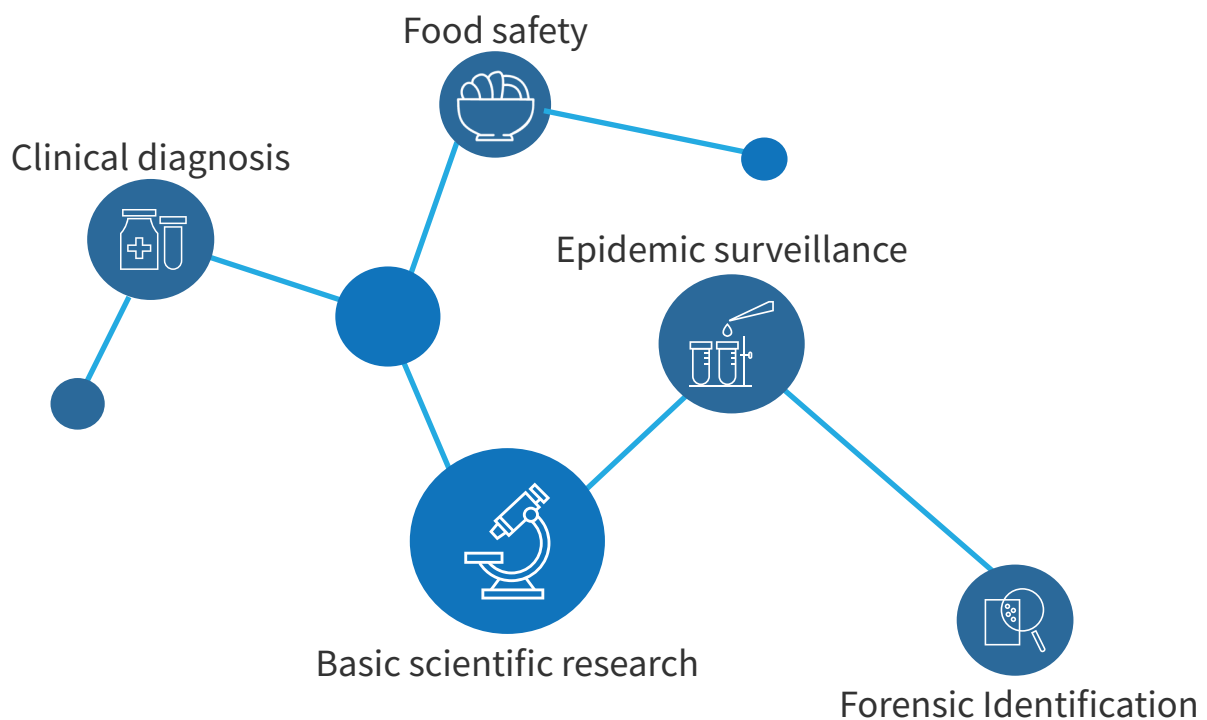
- ▶ Electric hot lid, one-button lid opening design, ensure perfect fit between hot lid and consumables
- ▶ 75 ° turnable 10.1 inch screen, foldable during standby
- ▶ Faster ramping rate, more accurate temperature control



FC-96B

- ▶ Manual hot lid, high-strength mechanical buckle, not easy to wear
- ▶ Small size, light weight, suitable for various complex experimental environments
- ▶ Unique rear air outlet design, multiple machines can be placed side by side without difficult heat dissipation

Application Scenario



Product Parameter

Model	FC-96GE	FC-96B
Sample volume and consumable type	96-well×0.2 mL (Half-skirted plate, Non-skirted plate; 12×8 strip tubes, 8×12 strip tubes,single tube)	96-well×0.2 mL (Full-skirted plate,half-skirted plate,Non-skirted plate; 12×8 strip tubes, 8×12 strip tubes,Single tube)*
Technology program	Thermoelectric semiconductor technology	
Monitor	Color touch screen (10.1 inch)	Color touch screen (7 inch)
Screen adjustability	Rotatable (75° max)	Fixed
Block temperature range	4°C-105°C	
Maximum ramp rate	5.5°C/s	5.5°C/s
Temperature distribution	≤±0.2°C (55°C)	
Gradient	36°C max and accuracy is ±0.5°C	
Temperature accuracy	4°C-105°C	
Temperature control mode	Block mode, Tube mode	
Ramp rate adjusting range	0.1~4.5°C/s	
Program capacity	Infinite	
Maximum cycle	99	
Time increase/decrease	0~9min59s, LongPCR is available	
Temperature increase/decrease	0~9.9°C, Touchdown PCR is available	
Auto pause/ Power-off protection	Available	
4°C reservation	Available	
Real-time operation status display	Graph-text	
Hot lid temperature range	Room temperature + 5~110°C	
Hot lid temperature display accuracy	0.1°C	
Intelligent hot lid	Hot lid shut-off automatically when product is preserved at low temperature or program ends	
Communication interface	USB	
Voltage range	100~240VAC.50/60Hz	
Power (max)	600W	
Dimensions (D×W×H)	351×297×267.5 mm	280×187×190 mm
Net weight	17kg	7kg

*The maximum height of consumables for FC-96B is 24mm. It is recommended to use flat lid consumables or use sealing film for sealing. If a silicone pad is used for sealing, the thickness of the silicone pad skirt should be less than 2mm. Due to the high pressure on the hot lid of the instrument, when using a single tube for experiments, it is necessary to place an empty tube at each corner (A1, A12, H1, H12) of the block for support, otherwise it may cause deformation or even damage to the consumable.

📍 Address: Building 6, Yinhu Innovation Center, No. 9 Fuxian Road, Yinhu Street, Fuyang District, Hangzhou City, Zhejiang Province.

✉ Email: overseas@bigfishgene.com
☎ Tel: +86-571-56390366

🌐 Website: www.bigfishgene.com