



BIOLOGICAL STEREOSCOPE INVERTED BIOLOGICAL BIOLOGICAL STEREOSCOPE INVERTED BIOLOGICAL





EUREKAM

Main features:

- Resolutions: 1.3 , 3.0 , 5.0 and 9.0 Megapixel
- Quality images with good colors
- USB 2.0 interface
- C-mount

EUREKAM series includes cameras with good quality/price, suitable for all kinds and everyday observations thanks to simple operations, a good image analysis software and a wide range of available resolutions.

Models

EUREKAM 1.3 - 1.3 Megapixel CMOS, color
 EUREKAM 3.0 - 3.0 Megapixel CMOS, color
 EUREKAM 5.0 - 5.0 Megapixel CMOS, color
 EUREKAM 9.0 - 9.0 Megapixel CMOS, color

Applications:

- Bright field, dark field, DIC
- Archiving, Cytology, Histology, Pathology
- Quality control, semiconductor inspection
- Materials and surfaces inspection



EUREKAM PRO

Main features:

- Resolutions: 3.0 and 5.0 Megapixel
- High quality images with excellent colors
- Higher speed (frame rate)
- Binning / Sub-sampling
- USB 2.0 interface
- C-mount

EUREKAM PRO series includes cameras with higher performance and equipped with advanced functions software. These cameras are ideal for professional applications in scientific, medical and life science fields.

Models

EUREKAM PRO 3.0 - 3.0 Megapixel CMOS, color
 EUREKAM PRO 5.0 - 5.0 Megapixel CMOS, color

Applications:

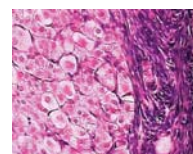
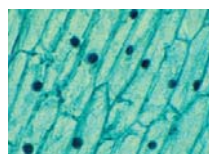
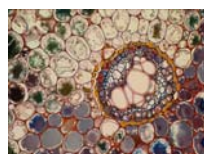
- Bright field, dark field, DIC
- Live cell imaging, Cytology, Histology, Pathology
- Metrology, semiconductor industry
- Physics of materials, quality control

>> CAMERA SPECIFICATIONS

	Mega Pixel	Resolution	Sensor	Frame/sec	Exposure	Sensibility (@550nm)	Dim. Pixel (µm)	Software
EUREKAM								
EUREKAM 1.3	1.3	1280 x 1024	CMOS 1/3"	12	Rolling shutter	1.8 V/lux-sec	5.2	BEL View
EUREKAM 3.0	3.0	2048 x 1536	CMOS 1/2"	6	Rolling shutter	1.0 V/lux-sec	3.2	BEL View
EUREKAM 5.0	5.0	2592 x 1944	CMOS 1/2"	3	Rolling shutter	1.0 V/lux-sec	2.4	BEL View
EUREKAM 9.0	9.0	3488 x 2616	CMOS 1/2.3"	2	Rolling shutter	0.44 V/lux-sec	1.75	BEL View
EUREKAM PRO								
EUREKAM PRO 3.0	3.0	2048 x 1536	CMOS 1/2"	6 @full resolution 21 @half resolution	Rolling shutter	1.0 V/lux-sec	3.2	BEL Eurisko
EUREKAM PRO 5.0	5.0	2592 x 1944	CMOS 1/2.5"	3 @full resolution 12 @half resolution	Rolling shutter	0.53 V/lux-sec	2.2	BEL Eurisko

With EUREKAM and EUREKAM PRO cameras **are included** the following accessories: micrometric slide for measurements calibration, 0.5x adapter for eyepieces (Ø23mm and Ø30mm), camera drivers, acquisition and image analysis software.

EUREKAM and EUREKAM PRO cameras can be mounted on trinocular microscopes, binocular and monocular, both biological and stereo.





BLACKLIGHT

Main features:

- Resolutions: 1.4 , 3.3 and 5.0 Megapixel
- Cameras also cooled for best contrast
- Long exposure
- USB 2.0 interface. C-mount

BLACKLIGHT series includes cameras for applications with low-medium light intensity. They are ideal for observations in fluorescence and metallography. Some models are equipped with Peltier cooling system (upto -30°C below environment temperature) to reduce to minimum the noise and obtain the maximum contrast also with low light.

Models:

BLACKLIGHT 33C - 3 Mpixel CCD , color, cooled
 BLACKLIGHT 14CBW - 1.4 Mpixel CCD, black/white, cooled
 BLACKLIGHT 5000 - 5.0 Megapixel CCD, color, very good colors rendering, ideal for not-critical fluorescence applications.

Applications:

- Medium - low light Fluorescence
- FISH, FRET, GFP, Bioluminescence
- Bright field, dark field, DIC
- Live cell, Histology, Phatology
- Quality control, semiconductor industry
- Materials and surfaces inspection

>> CAMERA SPECIFICATIONS

	Mega Pixel	Resolution	Sensor	Frame/sec	Exposure	Sensibility (@550nm)	Dim. Pixel (µm)	Software
BLACKLIGHT								
BLACKLIGHT 33C	3.0	2048X1536	CCD 1/1.8"	5	Max 24 min	1.8 V/lux - sec	3.46	BEL View
BLACKLIGHT 14CBW	1.4	1360 x 1024	CCD 2/3"	7.5	Max 600 sec	3.5 V/lux - sec	6.45	BEL View
BLACKLIGHT 5000	5.0	2592×1944	CCD 1/2"	3.75	Max 388 sec	0.5 V/lux - sec	2.77	BEL Eurisko

With BLACKLIGHT cameras **are included** the following accessories: micrometric slide for measurements calibration, 0.5x adapter for eyepieces (Ø23mm and Ø30mm), camera drivers, acquisition and image analysis software.

BLACKLIGHT cameras can be mounted on trinocular microscopes, binocular and monocular, both biological and stereo.

OTHER CAMERAS

	NIR-CAM	high sensibility in the near INFRARED, high speed, high dynamic range
Resolution: 720H x 480V. Sensibility: 4.8 V/lux-sec. Black & white. Global shutter. High sensibility in the near infrared. Dynamic range: 100dB Speed: 60fps@720X480 - 65fps@640X480 - 120fps@320X240 Sensor: 1/3" . Pixel Dimensions: 6.0µm. USB 2.0. C-mount. Software "BEL View"		
	SXGA-CAM	can be connected directly to a LCD monitor, NO PC/software required
Direct RGB (D-sub 15pin) output to connect the camera without help of a computer and software. High speed. Very good for quality control, observations with biological and stereo microscopes. White balance switchable: auto/manual. Automatic exposure. C-mount.		
	TV-CAM	can be connected directly to video-projectors or to external monitors
CCD camera with good colors rendering and composite video output, easily connectable to video-projectors, external monitors or to computers (through optional USB adapter). White balance automatic/manual. Exposure control. Through a CCTV lens (optional) it is possible to use the camera for environment shoots.		
	DV1300-HS	cameras with high number of frames per second
1.3 Mpixel CMOS cameras with high number of frames per second, for industry vision applications. Compact dimensions. Color or Black/White (mod. DV1300BW-HS). Sensor: 1/3". Resolution: 1280x1024. Dynamic range >60dB Speed: 25 fps @1280x1024 - 80 fps @ 640x480 - 200 fps @320x240 USB 2.0. C-mount. Tripod attachment available on request. Software "BEL View"		






BEL PHOTONICS ► MC-280, 63X11H, MC-1

BEL Photonics Student cameras are entry-level cameras for Microscopy. Suitable for educational, routine laboratory work, object inspection. MC-280 model is capable to give live preview and to capture images directly into a computer, making the work easier for the user. The 63X11H is a high quality CCD camera with video output that can be directly connected to video-projectors or external monitors or to computer (through optional USB kit). The multifunctional MC-1 CCD camera has a flexible arm that allows this instrument to be a complete tool for educational and general laboratory purposes.

Le telecamere BEL Photonics serie Student sono telecamere a colori ottime per entrare nel mondo della Microscopia.

Il modello MC-280 permette il preview in tempo reale e la cattura delle immagini direttamente nel computer, facilitando il lavoro dell'utilizzatore. Il modello 63X11H è una telecamera CCD di alta qualità dotata di uscita Video che può essere collegata direttamente a video-proiettori, a monitor esterni oppure a computer (attraverso il kit USB opzionale). La telecamera multifunzione MC-1 è dotata in un braccio flessibile rendendola assai versatile e adatta per scopi didattici e per le necessità generali di un laboratorio.

Model - Modello	Resolution Risoluzione	Output Uscita	Mount - Attacco
MC-280	331.584 Pixel	USB 2.0	Eyepiece (Ø23 and Ø30) Oculare (Ø23 e Ø30)
	<p>Eyepiece color camera for Biological and Stereo Microscopes</p> <ul style="list-style-type: none"> □ CMOS sensor 1/3" □ Minimum illumination 3LX □ White balance: auto/manual □ Exposure control: auto/manual □ Fit into 23mm and 30mm diameter eyepieces □ Software for Image acquiring □ CD with drivers 	<p><i>Telecamera Oculare a colori per Microscopi Biologici e Stereo</i></p> <ul style="list-style-type: none"> □ Sensore CMOS da 1/3" di pollice. □ Illuminazione minima 3LX □ Bilanciamento bianco: auto/manuale □ Controllo esposizione: auto/manuale □ Adatta per oculari di diametro 23mm e 30mm □ Software di acquisizione immagini □ CD con drivers 	
Model - Modello	Resolution Risoluzione	Output Uscita	Mount - Attacco
63X11H	470 TV lines 470 linee TV	Video (RCA)	C
	<p>CCD color camera for Microscopes with Video output</p> <ul style="list-style-type: none"> □ 1/3" CCD sensor. 798x548 Pixels □ White balance: auto/manual □ Gain control: ON/OFF □ Video output: composite (PAL or NTSC) □ Through optional adapters it can be connected to eyepieces (biological and stereo) □ CCTV 16mm (optional) for enviroment shoots □ Optional USB Kit for connection to computer 	<p><i>Telecamera CCD a colori per Microscopi con uscita video</i></p> <ul style="list-style-type: none"> □ Sensore CCD 1/3". Pixel : 798x548 □ Bilanciamento bianco: auto/manuale □ Controllo del guadagno: ON / OFF □ Uscita Video composito (PAL o NTSC) □ Tramite l'adattatore (opz.), puo' essere anche applicata sugli oculari (biologici e stereo) □ E' disponibile (opz.) una lente CCTV 16mm per effettuare anche riprese d'ambiente □ Tramite il KIT USB (opz.) è possibile il collegamento al computer 	
Model - Modello	Resolution Risoluzione	Output Uscita	Mount - Attacco
MC-1	420 linee TV 420 linee TV	Video (RCA)	Eyepiece (Ø23 and Ø30) Oculare (Ø23 and Ø30)
	<p>Multifunctional CCD camera with flexible arm</p> <ul style="list-style-type: none"> □ 1/3" CCD sensor. 500x582 Pixels □ White balance: automatic □ Automatic shutter: 1/50sec – 1/10000sec □ Objective F=8mm. Focus from 10mm to infinity □ Video output: composite (PAL) □ Optional USB Kit for connection to computer 	<p><i>Telecamera Multifunzione CCD a colori con braccio flessibile</i></p> <ul style="list-style-type: none"> □ Sensore CCD 1/3". 500x582 Pixels □ Bilanciamento bianco: automatico □ Otturatore automatico: 1/50sec – 1/10000sec □ Obiettivo F=8mm. Focalizza da 10mm a infinito □ Uscita Video composito (PAL) □ Tramite il KIT USB (opz.) è possibile il collegamento al computer 	

Accessories - Accessori

MB060020	USB Kit for connection to a PC through USB, image analysis software included	<i>Kit USB per connessione a porta USB del computer, software di analisi immagini incluso</i>
MB060025	CCTV Objective, F=16mm, for enviroment image shoots	<i>Obiettivo CCTV, F=16mm, per riprese d'ambiente</i>
MB060022	0.5X Adapter for Eyepieces (23mm and 30mm diameter)	<i>Adattatore 0.5X per oculari (diametri 23mm e 300mm)</i>

ACCESSORIES / ACCESSORI



V-6

Description	Descrizione	Cod.
ACCESSORIES FOR BIOLOGICAL MICROSCOPES		
ACCESSORI PER MICROSCOPI BIOLOGICI		
Universal Video Head mod.BVM-100 with monitor, for Biological and stereo	Testa VIDEO BVM100, con monitor, Universale per Biologici e Stereo	MB070009
Eyepiece 12.5x/14	Oculare 12.5x/14	MB010004
Eyepiece 16x/13	Oculare 16x/13	MB010005
Eyepiece 10x/18, with divisions (10x0.1mm)	Oculare 10x/18 micrometrico (10x0.1mm)	MB010007
Eyepiece 10x/20, with divisions (10x0.1mm)	Oculare 10x/20 micrometrico (10x0.1mm)	MB010009
Dark field condenser, dry (0.77-0.91) and immersion (1.15-1.40)	Condesatore campo oscuro, a secco e immersione	MB030003
Phase contrast achromatic 40x set	Set per contrasto di fase 40x acromatico	MB050021
Phase contrast plan-achromatic 40x set	Set per contrasto di fase 40x plan-acromatico	MB050022
Phase contrast achromatic complete set	Set completo per contrasto di fase acromatico	MB050015
Phase contrast plan-achromatic complete set	Set completo per contrasto di fase plan-acromatico	MB050016
Phase contrast Infinity plan-achromatic complete set	Set completo per contrasto di fase Infinity plan-acromatico	MB050023
USB Kit, with converter Video-USB	USB Kit, con convertitore VIDEO-USB	MB060020
Photographic tube, 2.5x-4x, for Reflex cameras	Attacco fotografico, 2.5x-4x, per Fotocamere Reflex	MB060008
Adapter 0.4x with C-mount for 1/3" cameras	Adattatore 0.4x con attacco C- per sensori 1/3"	MB060011
Adapter 1x with C-mount for 1/2" cameras	Adattatore 1x con attacco C- per sensori 1/2"	MB060012
T-Adapter for Reflex cameras (Nikon, Canon)	Adattatore tipo T per Fotocamere Reflex (Nikon, Canon)	MB060021
Micrometric slide (2mmx0.01mm)	Vetrino Micrometro oggetto (2mmx0.01mm)	MB120001
Eyepiece 0,5X adapter for cameras (C to 23mm and C to 30mm)	Adattatore 0,5X per oculare, per telecamere (C-23mm e C-30mm)	MB060022
ACCESSORIES FOR STEREO MICROSCOPES		
ACCESSORI PER STEREO MICROSCOPI		
Eyepiece 10x with divisions (10x0.1mm) for STMPRO	Oculare 10x micrometrico (10x0.1mm) per STMPRO	MS010002
Eyepiece 15x for STMPRO	Oculare 15x per STMPRO	MS010003
Eyepiece 20x for STMPRO	Oculare 20x per STMPRO	MS010004
Eyepiece 25x for STMPRO	Oculare 25x per STMPRO	MS010005
Additional objective 0.5x for STMPRO	Obiettivo addizionale 0.5x per STMPRO	MS020001
Additional objective 0.75x for STMPRO	Obiettivo addizionale 0.75x per STMPRO	MS020002
Additional objective 1.5x for STMPRO	Obiettivo addizionale 1.5x per STMPRO	MS020003
Additional objective 2x for STMPRO	Obiettivo addizionale 2x per STMPRO	MS020004
Dark field condenser w/ gem holder for STMPRO	Condesatore campo oscuro con porta-gemme per STMPRO	MS030005
Cold Light 150W illuminator w/annular Fiber optics guide	Illuminatore a fibre ottiche, 150W, con guida anulare	MS100013
Cold Light 150W illuminator w/Double arm Fiber optics guide	Illuminatore a fibre ottiche, 150W, con guida a doppio braccio	MS100012
LED annular digital illuminator, mod. LED-6T	Illuminatore anulare a LED, digitale, mod. LED-6T	MS100010
Micrometric slide for stereo, 10mm x 0,1mm	Vetrino Micrometro oggetto per stereo, 10mm x 0,1mm	MB120002
Additional objective 0.3x for TZM	Obiettivo addizionale 0.3x per TZM	MS020005
Additional objective 0.5x for TZM	Obiettivo addizionale 0.5x per TZM	MS020006
Additional objective 0.75x for TZM	Obiettivo addizionale 0.75x per TZM	MS020007
Additional objective 1.5x for TZM	Obiettivo addizionale 1.5x per TZM	MS020008
Additional objective 2x for TZM	Obiettivo addizionale 2x per TZM	MS020009
LED annular illuminator, LED-LAI, for TZM	Illuminatore anulare a LED, mod. LED-LAI, per TZM	MS100011
USB Kit, with converter Video-USB	USB Kit, con convertitore VIDEO-USB	MB060020
VARIOUS		
VARI		
Box with 30 prepared HISTOLOGICAL slides	Scatola con 30 vetrini con preparati ISTOLOGICI	MB120003
Box with 30 prepared BOTANICAL slides	Scatola con 30 vetrini con preparati BOTANICI	MB120004
Box with 30 prepared ZOOLOGICAL slides	Scatola con 30 vetrini con preparati ZOOLOGICI	MB120005
Hand Microtome, with blaze and box	Microtomo manuale a cilindro, completo di lama e custodia	MB120009

Many other accessories for Microscopes are available. Our Microscopes specialists will be happy to help you in the choice of the best Microscope configuration for your needs.

Moltri altri accessori per Microscopi sono disponibili. I nostri specialisti in Microscopia saranno felici di aiutarvi nella scelta della configurazione del Microscopio piu' adatta alle vostre esigenze

microscopes@belengineering.com www.belengineering.com

