

Wireless Gel Doc.

Pacific Image Electronics Co.
Booth #: *Hall S1, 1029*

Kevin Tseng (GM)



Pacific Image Electronics

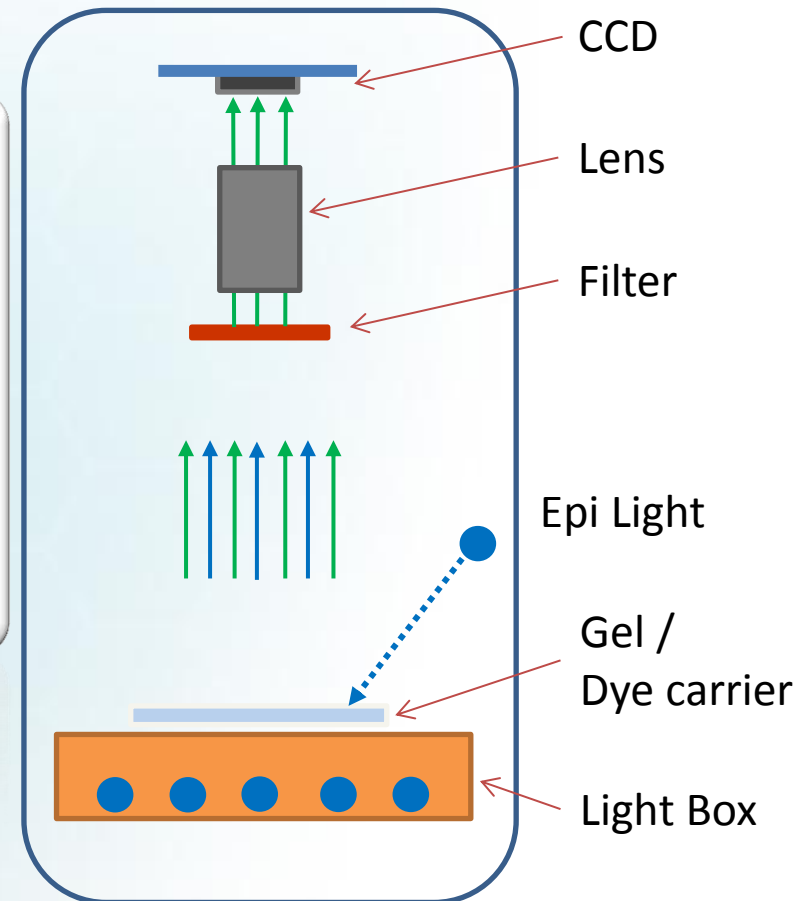


- 20 years young company
- “Image” solutions
- Public company in Taiwan
- No.1 film scanner worldwide
- 9 years at Bio image
- Make difference



Gel Doc

- Camera (CCD)
- Lens
- Filter
- Dye
- Light Box
- Cabinet
- UI



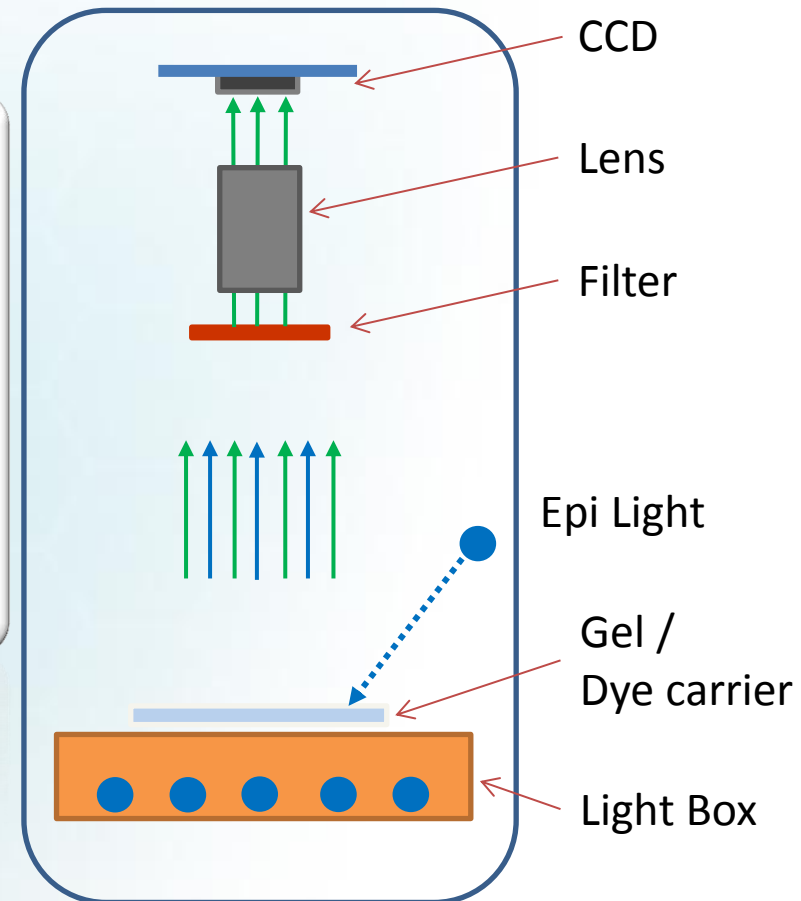
Needs for Gel Doc.

- Connect to bigger screen
- Avoid cross contamination
- Easy connection
- To smartphone or tablet PC
- Flexible for experiments
- Eco / healthy solution

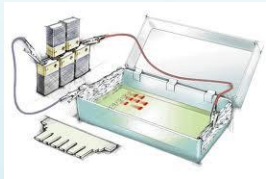


Make Difference

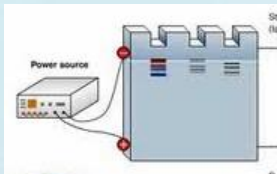
- Camera (CCD)
- Lens
- Filter
- Dye
- Light Box
- Cabinet
- UI



Working Scenario



Agarose DNA Gel



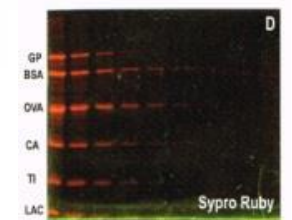
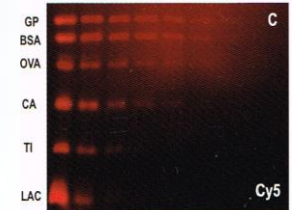
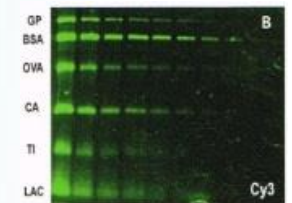
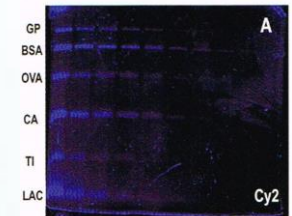
Protein SDS PAGE



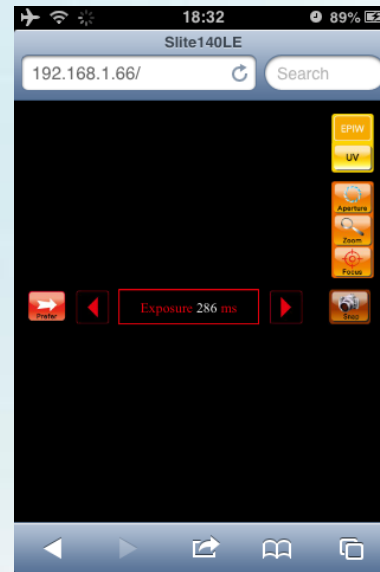
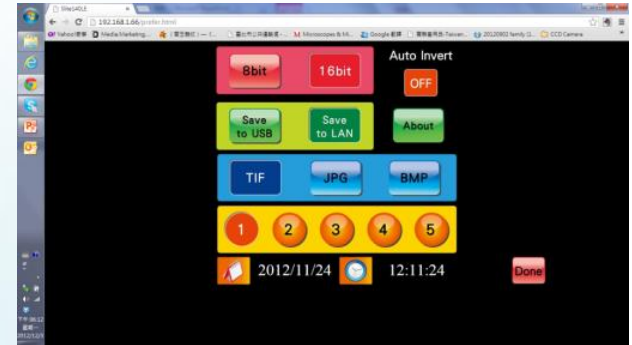
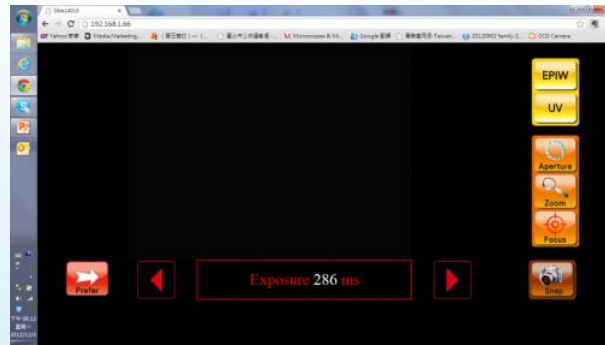
Smart Phone



NB / DT

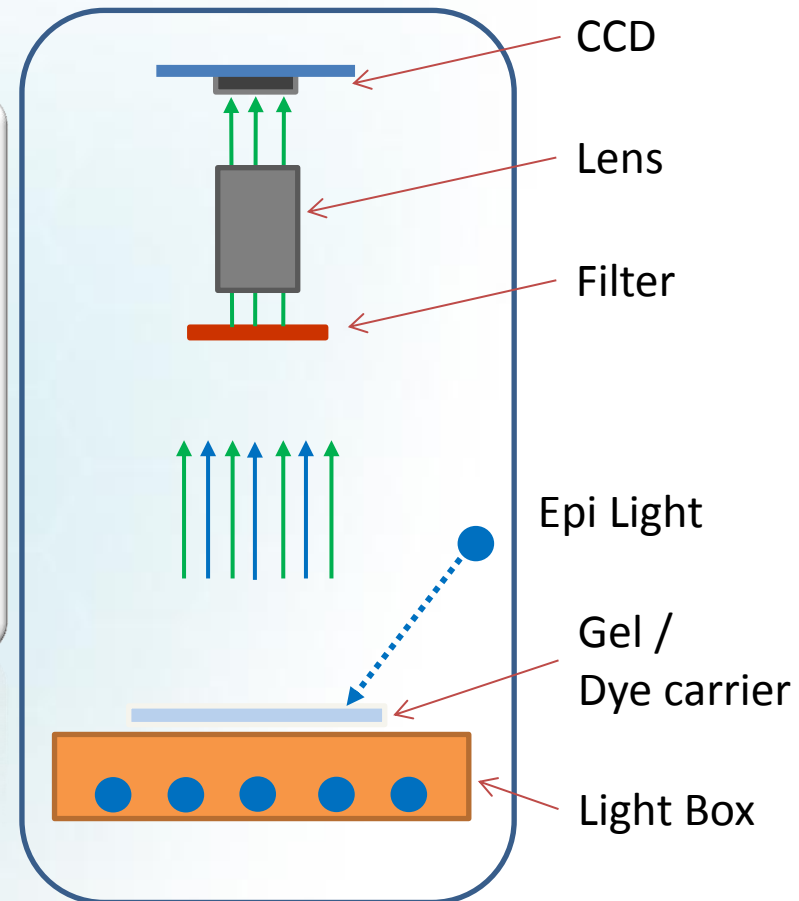


Wirelessly works with PC's & Smartphones/Tablets

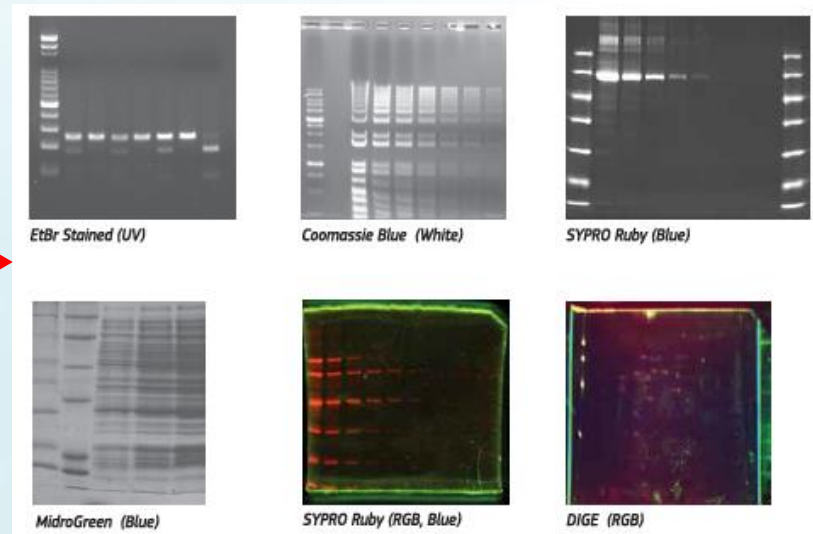


Make Difference

- Camera (CCD)
- Lens
- Filter
- Dye
- **Light Box**
- Cabinet
- UI



Changeable Light Box



Slite Series GDS		Slite 140S	Slite 200W	Slite 200W BW	Slite 200W RGBW
Sensor	Sensor	CCD	CCD	CCD	CCD
	Exposure Time	Up to 10 sec	Up to 10 sec	Up to 10 sec	Up to 10 sec
	Capture Resolution	1.4M; 1360x1024	2.M; 1600x1200	2.M; 1600x1200	2.M; 1600x1200
	Bit Depth	12 bit	12 bit	12 bit	12 bit
Lens	Lens Type	6 X Zoom Lens	6 X Zoom Lens	6 X Zoom Lens	6 X Zoom Lens
	Motor AP & Zoom	V	V	V	V
	Auto Focus	V	V	V	V
	View Area	20 x 16 cm	20 x 16 cm	20 x 16 cm	20 x 16 cm
Filter	Motor-Driven, 6 Positions Filter Turret	V	V	V	V
	On Board Emission Filter	595 nm	595 nm	535 nm	535 nm, 595 nm, 665nm
Light	UV Transillumintor	V	V	Optional	Optional
	White Back Light	V	V	V	V
	Epi White Light	V	V	V	V
	Colorfluor 200B	Optional	Optional	V	No need
	Colorfluor 200RGB	NA	NA	NA	V
Control	On Board Display	8" Touch LCD	8" Touch LCD	8" Touch LCD	8" Touch LCD
	Standalone Control	V	V	V	V
	Wired LAN Control	V	V	V	V
	WiFi Remote Control	NA	V	V	V
	Image Storage	USB	USB & WiFi	USB & WiFi	USB & WiFi
General	Power	100V-240 VAC	100V-240 VAC	100V-240 VAC	100V-240 VAC
	Dimension (WxHxD)	300x500x400mm	300x500x400mm	300x500x400mm	300x500x400mm
	Weight	30Kg	29Kg	29.5Kg	29Kg
	Certification	CE, FCC	CE, FCC	CE, FCC	CE, FCC

Applications

Experimental Method

Visible Stain	Fluorescence & Chemifluorescence			
White	Blue	Green	Red	UV
ProStain (VisPro) Silver Stain CBB Stain X-Ray Film NBT / BCIP	Attophos ECFP EGFP FAM FITC SYBR Gold SYBR Green I / II SYPRO Orange SYPRO Ruby SYPRO Tangerine Midori Green Midori Green Advance	5-ROX Alexa 514 532 546 555 Alexa 568 594 BODIPY 576/589 Cy3 Deep Purple HEX HNPP NED Pro-Q Diamond RFP Rhodamine Red R-phycoerythrin SYPRO Red TAMRA Tetramathyrodamine	Alexa 633 635 647 660 680 BODIPY 650/665 Cy5 DiD DDAO phosphate TOTO-3	EtBr Fluorescein GFP SYBR Green I SYPRO Orange SYPRO Red SYPRO Ruby Texas Red Midori Green

Slite 200W RGBW

Slite 200W BW / Glite 900 BW

Slite 140S/200W

Slite 200W

Cost-efficient Instrument

Illumination	UV		White	
Excitation	Transmitted		Transmitted	Reflective
Application	DNA: Agarose Gel	Protein: SDS-PAGE, 2D GEL	Protein: SDS-PAGE	Protein: Western Blot
Dye	Ethidium Bromide, SafeView SYBR Safe, SYBR Green I, II, SYBR Gold, Cy2 Midori Green	SYPRO Ruby Alexa 488 Cy2	Coomassie Blue, Amido black, (Colorimetric)	Western Blot HRP (Colorimetric)



Slite 200W BW



Hazard-free, Eco/Earth Friendly Instrument

Illumination	Blue		White	
Excitation	Transmitted		Transmitted	Reflective
Application	DNA: Agarose Gel	Protein: SDS-PAGE, 2D GEL	Protein: SDS-PAGE	Protein: Western Blot
Dye	SYBR Safe, SYBR Green I, II, SYBR Gold, Cy2 Midori Green Midori Green Advance	SYPRO Ruby Alexa 488 Cy2	Coomassie Blue, Amido black, (Colorimetric)	Western Blot HRP (Colorimetric)



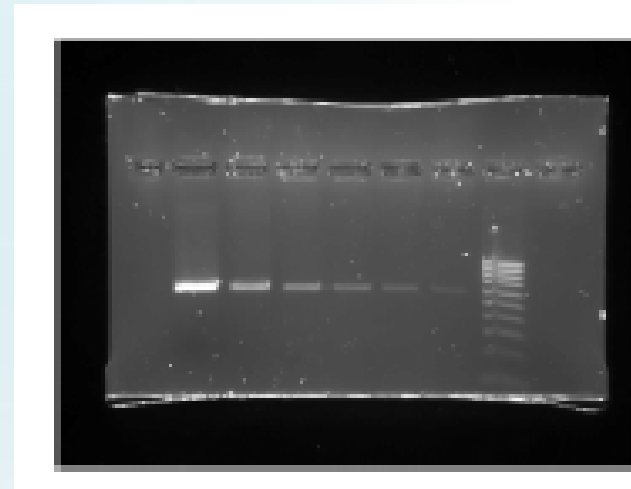
Comparison Image

- 200W BW works with most Hazard-free and Eco/Earth-friendly Dyes which of those can be used exactly the same way in agarose gel electrophoresis as Ethidium bromide (EtBr).

Superior signal to noise ratio SNR.



**EtBr
UV light**



**SYBR Save
Blue LED light**

Slite 200W RGBW

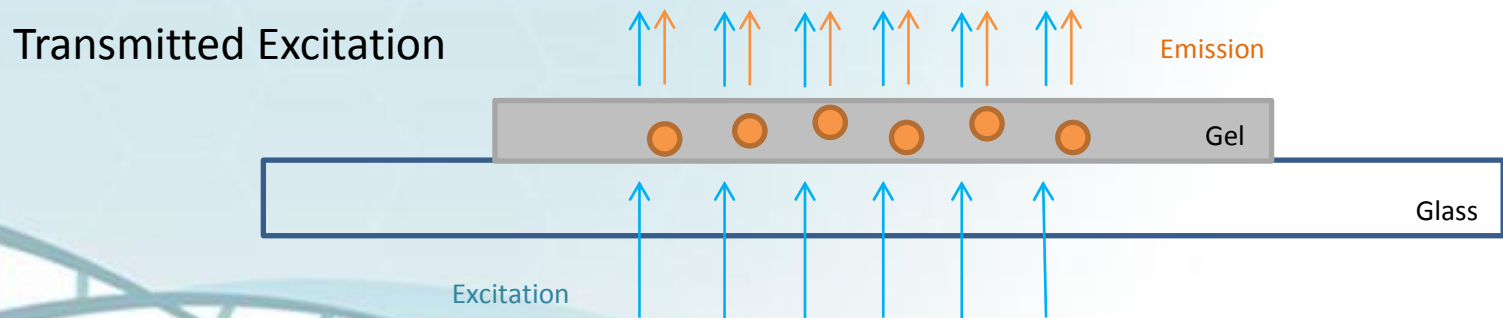
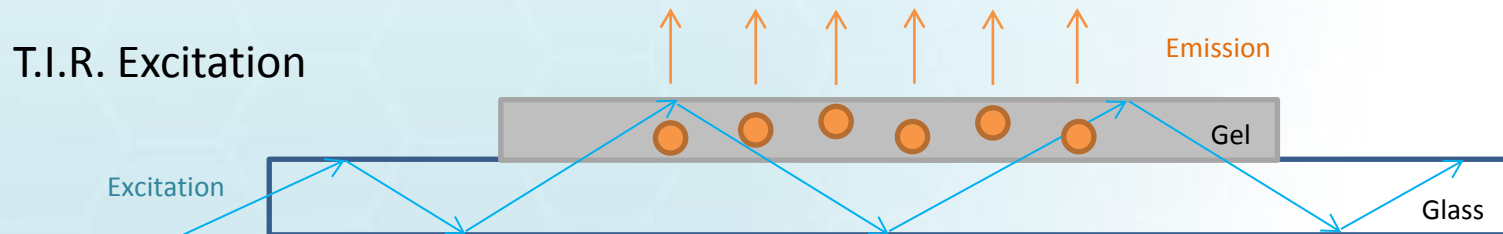


Eco/Earth Friendly, Multi-color Instrument

Illumination	RGB		White	
Excitation	Transmitted		Transmitted	Reflective
Application	DNA: Agarose Gel	Protein: SDS-PAGE, 2D GEL	Protein: SDS-PAGE	Protein: Western Blot
Dye	R: Cy 5, Alexa 647 G: Cy 3, Alexa 546 B: Cy 2, Alexa 488	R: Cy 5, Alexa 647 G: Cy 3, Alexa 546 B: Cy 2, Alexa 488 DIGE	Coomassie Blue, Amido black, (Colorimetric)	Western Blot HRP (Colorimetric)

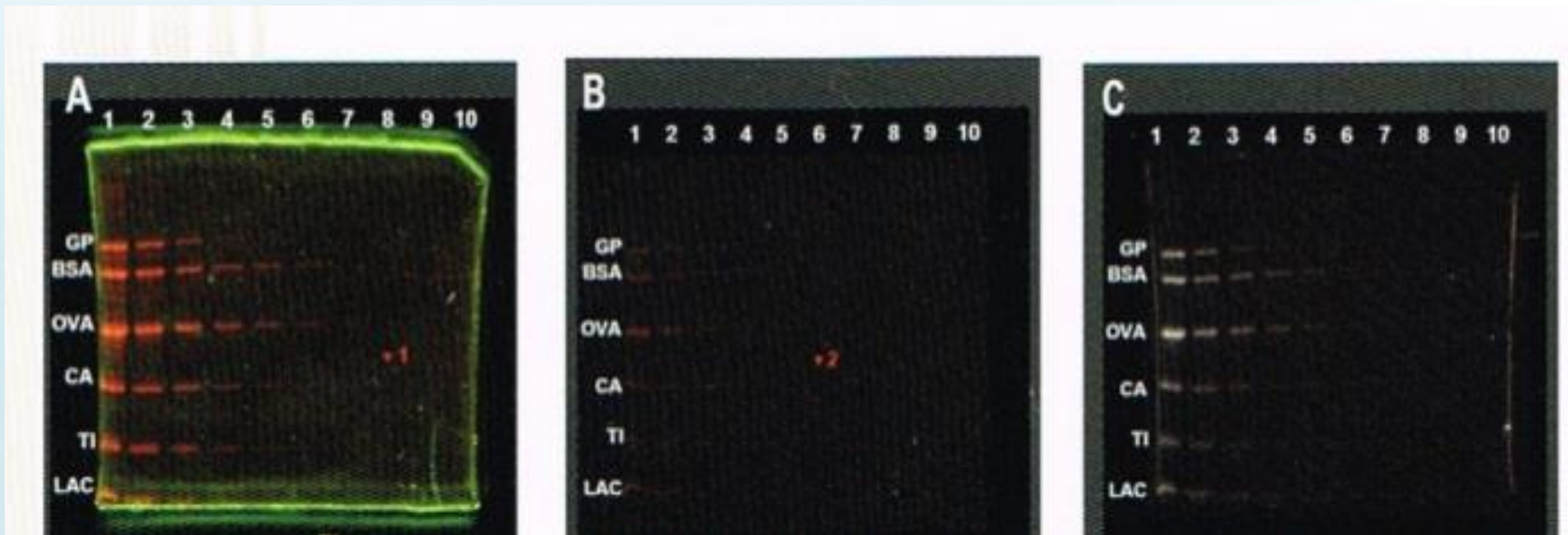
Total Internal Reflect

- High Efficiency
 - Total Internal Reflection → Multiple exciting
- Low Background Noise
 - Increase S/N



Comparison

- Closer to Laser scanner Typhoon performance



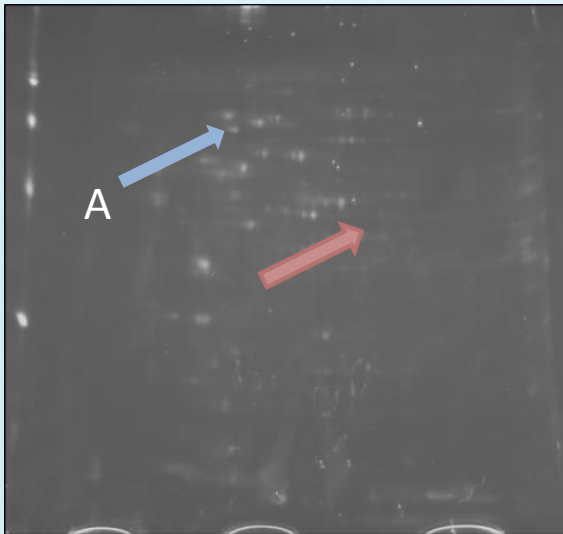
SYPRO Ruby
Colorfluor® R/G/B Illuminator

SYPRO Ruby
Blue Light Box
From C company

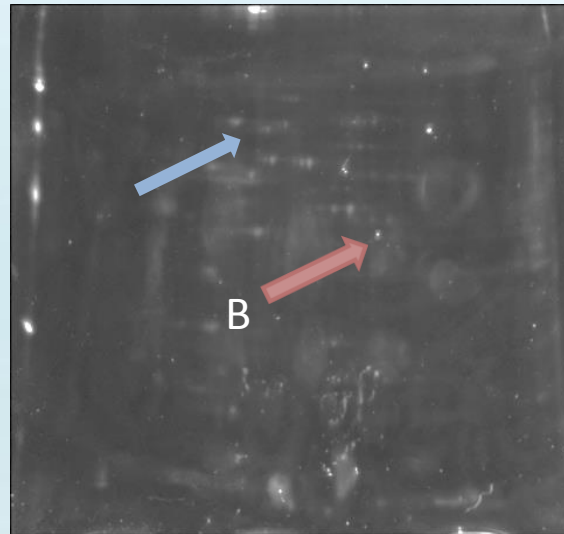
SYPRO Ruby
Captured by Typhoon Trio +
Fujifilm

RGB Application (DIGE)

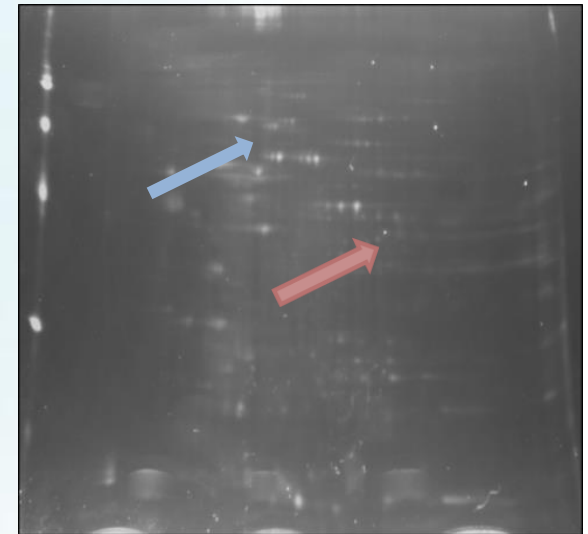
- Protein A: in image 1, not in 2 & 3
- Protein B:
 - In image 2 & 3, not in 1
 - Image 2 is lighter than image 3



Gel Image 1 : Control
Alexa 488



Gel Image 2 : Treated 3 days
Alexa 546



Gel Image 3 : Treated 5 days
Alexa 647

Conclusion

- Easily connecting
 - WiFi everywhere
- Total solution (upgradable)
 - From UV to un-harmful light
 - From colormetric to fluorescent staining
 - From single to multiple color
- High efficient transilluminator
 - T.I.R. R/G/B solution



Q & A

Booth #: Hall S1, 1029

Email: eric@scanace.com.tw ; kevin@scanace.com.tw

US Sales: sales_us@scanace.com

Worldwide Sales: sales@scanace.com.tw

Website: <http://www.scanace.com/>

Preview



- Totally Different GDS
 - Compact & Light (3.2kg)
 - Standalone
 - TV out → Lecture



13:00, 3/12 @ AL AIN ROOM "A"