

Slite 200W Gel Doc

WiFi Gel Doc for DNA/RNA/Protein Detections

Slite 200W Gel Doc

WiFi Gel Doc for DNA/RNA/Protein Detections

Choice of Slite 200W Gel Doc.

Slite 200W

Equipped with UV light source (302 nm) and automatic focusing system, Slite 200W is able to efficiently detect DNA/RNA fluorescent signal on gel through an easy-to-use UI.



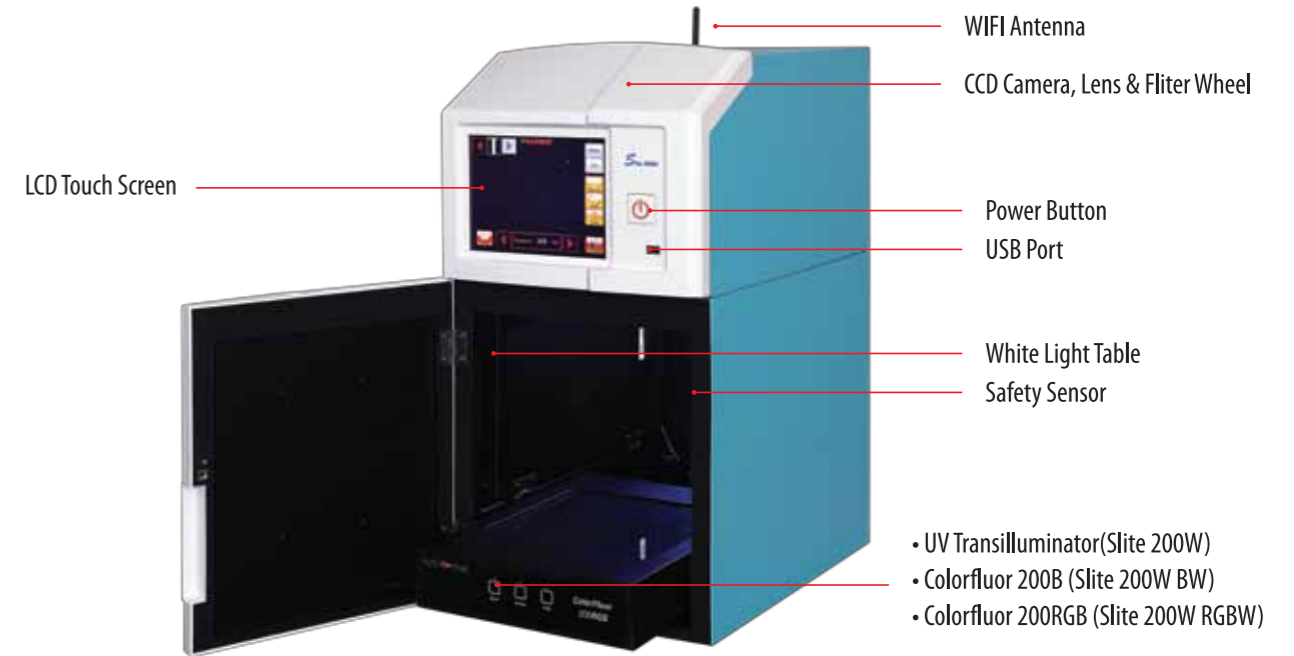
Slite 200W BW

Slite 200 BW has added ColorFluor 200B blue light illuminator in the system. In addition to the strong excitation of the blue light towards the fluorescence-stained gel, ColorFluor 200B carries a button for which the button may turn continuously to adjust the intensity of the blue light. Also, three light formats are available for ColorFluor 200B: all lights on, Epi lights on, and all lights off.

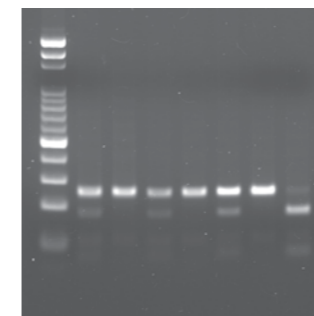


Slite 200W RGBW

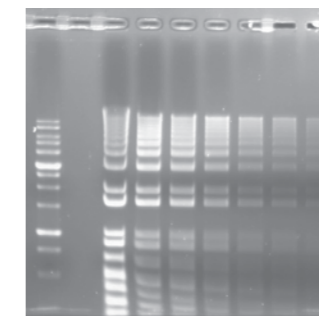
Patent-registered T. I. R. (Total Internal Reflection) light format makes the advanced image technology for multiplex and color differential signal detection come true on Slite 200W RGBW system.



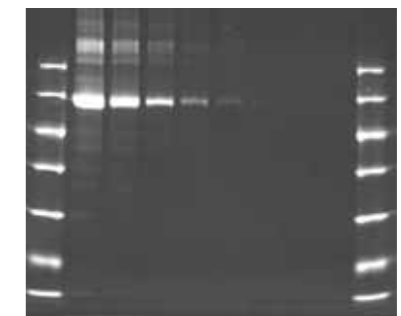
Application Image Data:



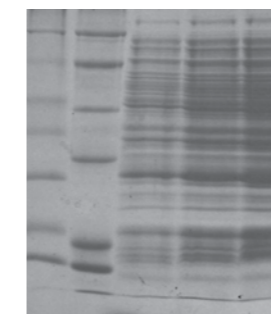
EtBr Stained (UV)



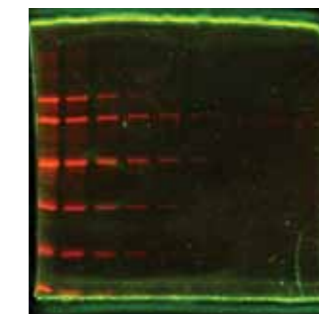
Coomassie Blue (White)



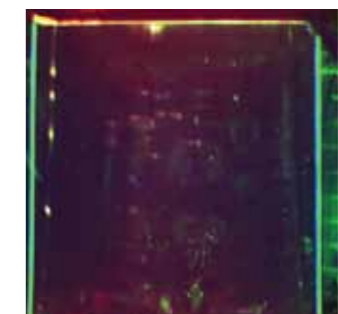
SYPRO Ruby (Blue)



MidroGreen (Blue)



SYPRO Ruby (RGB, Blue)



DIGE (RGB)

Slite 200W Gel Doc

WiFi Gel Doc for DNA/RNA/Protein Detections

Slite 200W Gel Doc

WiFi Gel Doc for DNA/RNA/Protein Detections

Specifications

Model	Slite 140S	Slite 200W	Slite 200W BW	Slite 200W RGBW
Image Capturing Unit				
Camera Set	Sensor	CCD Sensor	CCD Sensor	CCD Sensor
	Pixel Size (µm, VxH)	4.65 x 4.65	4.65 x 4.65	4.65 x 4.65
	Dynamic Range	0 to 3.6 OD	0 to 3.6 OD	0 to 3.6 OD
	Exposure Time	Up to 10 sec	Up to 10 sec	Up to 10 sec
	Cooling Method	None	None	None
	Cooling Temperature	None	None	None
	Capture Resolution	1.4M; 1360x1024	2.M; 1600x1200	2.M; 1600x1200
Lens Set	Bit Depth	12 bit	12 bit	12 bit
	Lens Type	6 X Zoom Lens	6 X Zoom Lens	6 X Zoom Lens
	Motor-driven Lens Operation	V	V	V
	Auto Focus	V	V	V
	View Area	20 x 16 cm	20 x 16 cm	20 x 16 cm
Lens Mount	C-mount	C-mount	C-mount	C-mount
Intelligent Darkroom				
Filter Set	Filter Turret	Motor-Driven, 6 position	Motor-Driven, 6 position	Motor-Driven, 6 position
	Emission Filter	595 nm	595 nm	535 nm, 595 nm, 665nm
Control Set	Display Panel	Build-in 8" Touch TFT LCD	Build-in 8" Touch TFT LCD	Build-in 8" Touch TFT LCD
	Standalone Control	Touch Screen Interface	Touch Screen Interface	Touch Screen Interface
	Image Storage	USB Storage	USB Storage & WiFi	USB Storage & WiFi
Lighting Set	UV Transilluminator	V	V	Optional
	White Back Light	V	V	V
	Epi White Light	V	V	V
	Colorfluor 200B	Optional	Optional	V
	Colorfluor 200RGB	Optional	Optional	Optional
Accessory	1D or 2D Analysis	Totalab Quant (Optional)		
	Accessory	Power Cord, User Manual		
General Info	Power	100V-240V	100V-240V	100V-240V
	Dimension (WxHxD)	300x500x400mm	300x500x400mm	300x500x400mm
	Weight	30Kg	29Kg	29Kg
	Certification	CE, FCC	CE, FCC	CE, FCC

* PIE reserves the right to change specifications without prior notification

- Tablet/smartphone/PC Wireless Remote Control
- Flexible Light Source: Replaceable UV and Blue and RGB Illuminator
- Support Full Range Fluorescent Dye Application in Slite 200W from UV(302nm), Blue(470nm), Green(520nm), Red(630nm) and White Light.
- Fluorescent Light (UV & blue) Applications: EtBr, Cy2, SYPRO Ruby, SYBR Green I/II, SYBR Gold Imaging.
- White Light Applications: Colorimetric Image Such as Sliver Stain, Coomassie Blue, Colony Plate observation Images.



For sales inquiries in other countries For sales inquiries in USA & Canada

Pacific Image Electronics Co.,Ltd.
10F-1, No.81, Hsin Tai Wu Rd. Sec.1,
Hsi Chih, Taipei Hsien 221 Taiwan

Tel : 886-2-2698-0369
Fax : 886-2-26980368
Email: sales@scanace.com.tw

Pacific Image Electronics
367 Van Ness Way STE 612
Torrance, CA 90501

Tel : (310) 618-8100
Fax : (310) 618-8200
Email: sales_us@scanace.com

BM Laboratuvar Sistemleri

AVE ENE

www.scanace.com

PACIFIC IMAGE ELECTRONICS