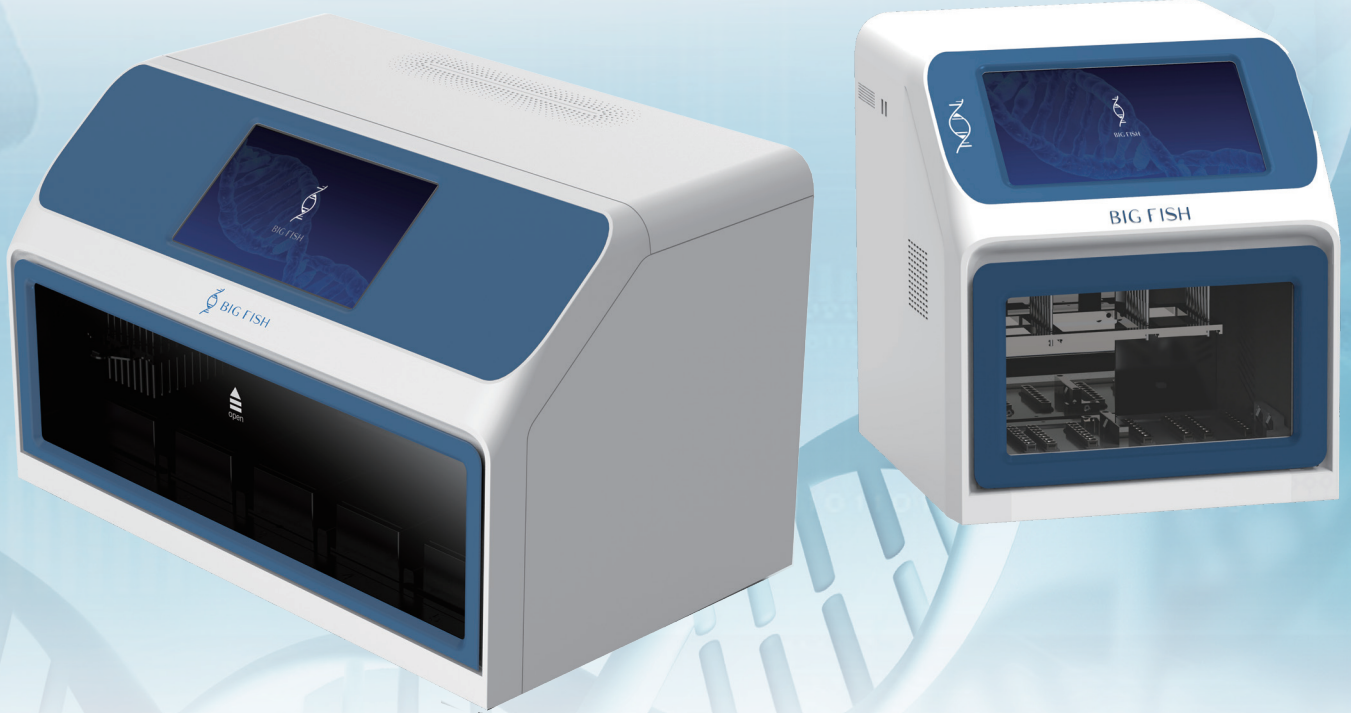




BIG FISH

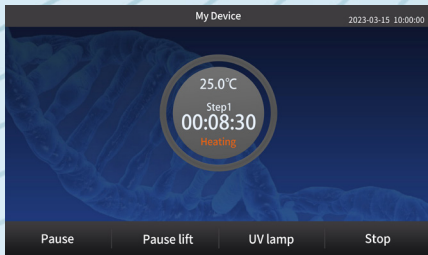
Hangzhou Bigfish Bio-tech Co., Ltd.

Automatic Nucleic Acid Purification System

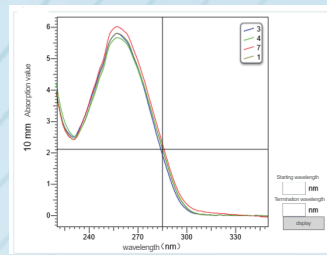


WeChat

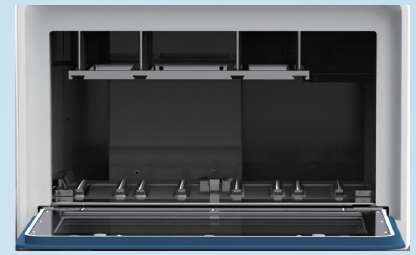
Product features



Industrialized control system makes stable operation for 24 hours



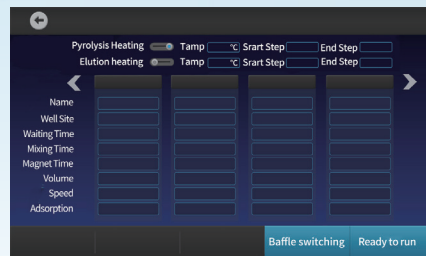
High product yield and good purity



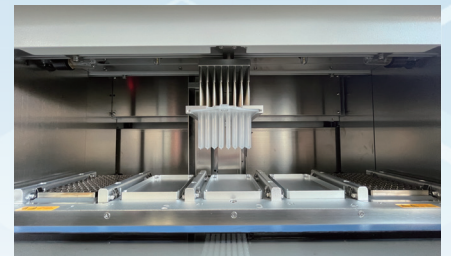
Automatic nucleic acid extraction processing can be performed on 32/96 samples simultaneously, greatly liberating the hands of researchers



Supporting reagents can be applied to various samples such as swabs, serum plasma, tissues, plants, whole blood, fecal soil, bacteria, etc., and have multiple specifications of single/16T/32T/48T/96T to meet different customer needs

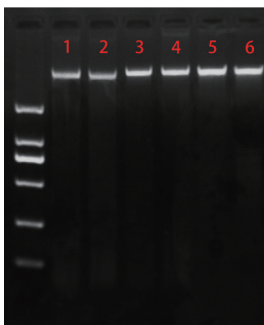


Self developed intelligent operation software and touch screen makes operation convenient and fast

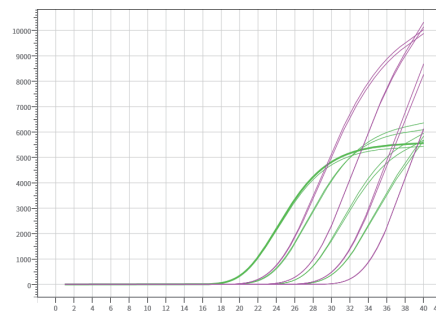


Disposable sheath insulates magnetic rods and samples, and machine is equipped with UV sterilization and air filtration adsorption systems to reject cross contamination

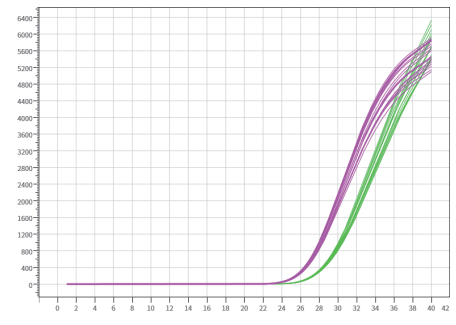
Application case



Electrophoresis test results of faeces and soil samples after extraction
1,2: human faeces 3,4: cat faeces 5,6: soil



UU sample extracted qPCR analysis results (including internal standard)



NG sample extracted qPCR analysis results (including internal standard)

| No. | type | potency | unit | A260 | A280 | 260/280 | 260/230 | sample |
|-----|------|----------|-------|--------|--------|---------|---------|--------|
| 1 | RNA | 556.505 | µg/ml | 13.913 | 6.636 | 2.097 | 2.393 | spleen |
| 2 | RNA | 540.713 | µg/ml | 13.518 | 6.441 | 2.099 | 2.079 | |
| 3 | RNA | 799.469 | µg/ml | 19.987 | 9.558 | 2.091 | 2.352 | kidney |
| 4 | RNA | 847.294 | µg/ml | 21.182 | 10.133 | 2.090 | 2.269 | |
| 5 | RNA | 1087.187 | µg/ml | 27.180 | 12.870 | 2.112 | 2.344 | liver |
| 6 | RNA | 980.632 | µg/ml | 24.516 | 11.626 | 2.109 | 2.329 | |

Total RNA Extraction Results from Fish Visceral Tissues

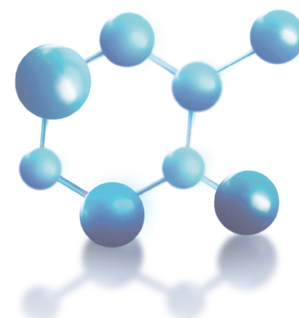
Recommend Kits

| Product name | Packing | Cat. No. |
|--|---------|---------------------|
| Magpure animal tissue genomic DNA purification kit(pre-filled package) | 32T/96T | BFMP01R/BFMP01R96 |
| Magpure Zebra fin tissue genomic DNA purification kit (pre-filled package) | 32T/96T | BFMP01RD/BFMP01RD96 |
| Magpure whole blood genomic DNA purification kit(pre-filled package) | 32T/96T | BFMP02R/BFMP02R96 |
| Magpure plant genomic DNA purification kit(pre-filled package) | 32T/96T | BFMP03R/BFMP03R96 |
| Magpure plant genomic DNA purification kit (polysaccharide and polyphenol) | 32T/96T | BFMP03RP/BFMP03RP96 |
| Magpure virus DNA purification kit(pre-filled package) | 32T/96T | BFMP04R/BFMP04R96 |
| Magpure dried blood spots genomic DNA purification kit(pre-filled package) | 32T/96T | BFMP05R/BFMP05R96 |
| Magpure oral swab genomic DNA purification kit(pre-filled package) | 32T/96T | BFMP06R/BFMP06R96 |
| Magpure total RNA purification kit(pre-filled package) | 32T/96T | BFMP07R/BFMP07R96 |
| Magpure virus DNA/RNA purification kit(pre-filled package) | 32T/96T | BFMP08R/BFMP08R96 |
| Magpure plasmid DNA purification kit(pre-filled package) | 32T/96T | BFMP09R/BFMP09R96 |
| Magpure bacteria genomic DNA purification kit (pre-filled package) | 32T/96T | BFMP10R/BFMP10R96 |
| Magpure Plasma DNA purification kit (pre-filled package) | 32T/96T | BFMP11R/BFMP11R96 |
| Magpure FFPE genomic DNA purification kit(pre-filled package) | 32T/96T | BFMP12R/BFMP12R96 |
| Magpure virus RNA purification kit(pre-filled package) | 32T/96T | BFMP14R/BFMP14R96 |
| Magpure soil and faeces genomic DNA purification kit (pre-filled package) | 32T/96T | BFMP15R/BFMP15R96 |
| 96 deep well plate(2.2ml) (U-shaped) | 96/箱 | BFMH01 |
| 8-strip tips | 100/箱 | BFMH02 |
| 96 deep well plate(2.2ml) (V-shaped) | 50/箱 | BFMH07 |
| 96-strip tips | 50/箱 | BFMH08E |

Technical application



Product parameter



| Model | BFEX-32E | BFEX-96E |
|---------------------------------|--|-------------------------------|
| Reagent type | Magnetic beads method | |
| Processing volume | 20~1000 μ L | |
| Sample throughput | 1~32 | 1~96 |
| Magnetic rod origin calibration | Software calibration (without dismantling) | |
| Operation screen | 10.1 inch LCD touch | |
| Operation system | 7 \times 24 hours industrial | |
| Program management | New, edit and delete programs,input and output programs freely | |
| Uniformity of wells | CV<3% | |
| Heating temp. range | RT.+5~125 $^{\circ}$ C | |
| Working temp. | 10~40 $^{\circ}$ C | |
| Working humidity | \leq 90% | |
| Mixing speed | Multi adjustable | |
| Multi absorption modes | Normal/Step/Cycle | |
| Retention of magnetic beads | \geq 99% | |
| Disinfection | UV lamp | |
| Interfaces | USB | |
| Power supply | AC110~240V 50/60Hz | |
| Size (mm) | 340 \times 360 \times 395 | 616 \times 375 \times 394 |
| Net weight (kg) | 24 | 30 |
| Filter system | HEPA filter system(Exhaust type) | |
| Built-in lighting | Standard | |
| Testing of tips | N/A | Standard |
| Code scanner | Optional | |
| Antidripping liquid | N/A | Optional |

Address: Building 6, Yinhu Innovation Center, No. 9 Fuxian Road, Yinhu Street, Fuyang District, Hangzhou City, Zhejiang Province.

Website: www.bigfishgene.com

Email: overseas@bigfishgene.com
Tel: +86-571-56390366