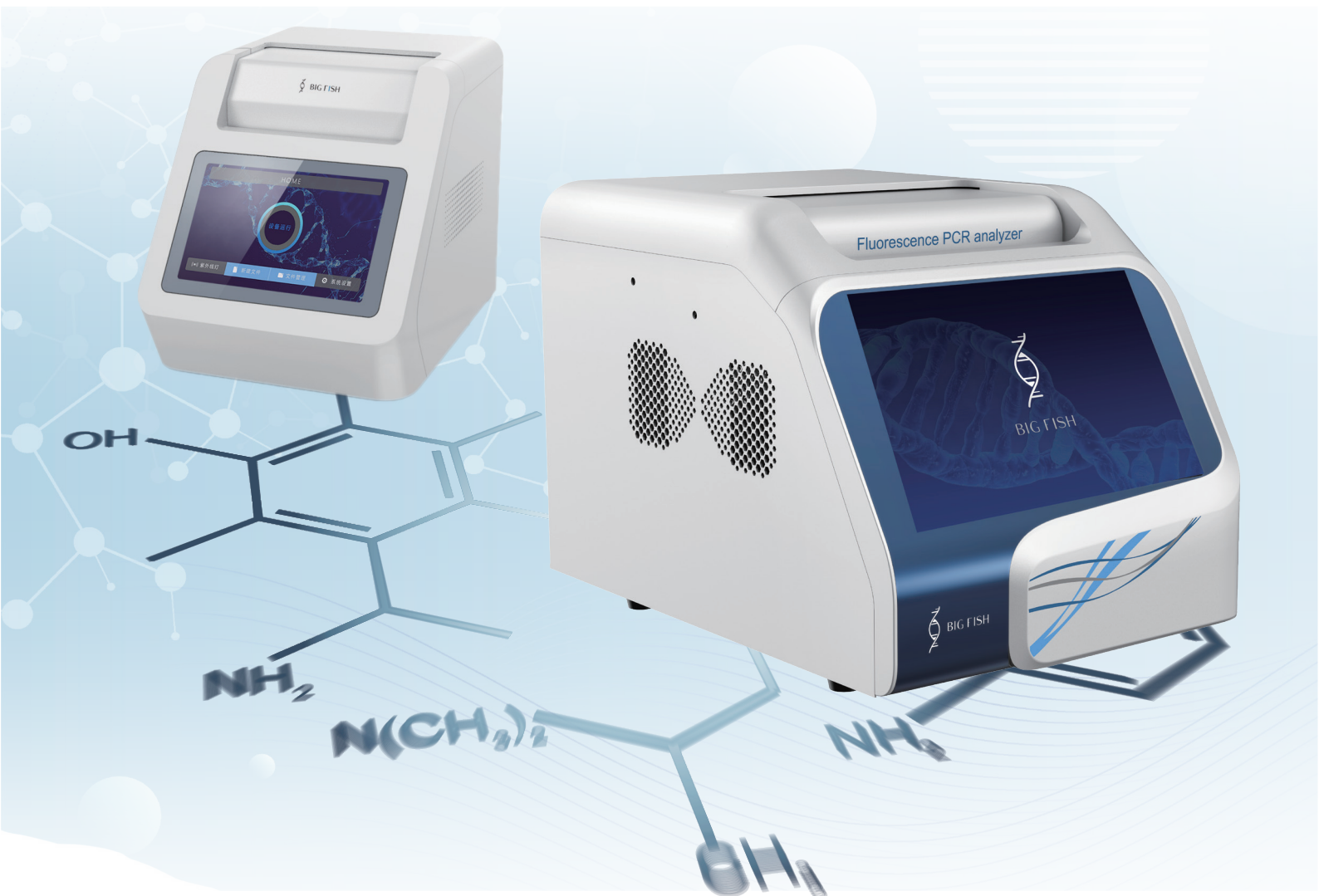




BIG FISH

Hangzhou Bigfish Bio-tech Co., Ltd.

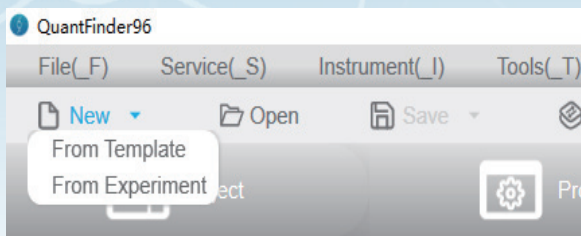
Real-time Fluorescent Quantitative PCR Analyzer



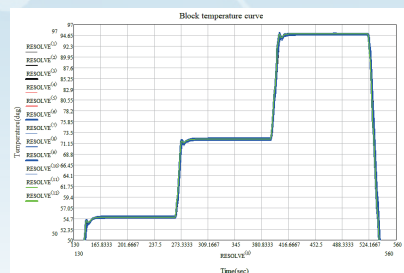
WeChat

Product features

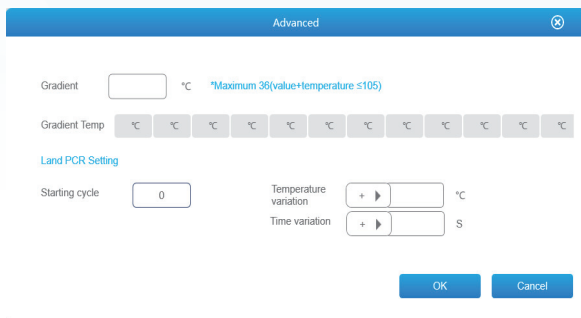
- ◆ High-quality Thermoelectric Module specially designed and customized, multi-point control, brings excellent temperature control performance, and BFQP-96 has a maximum ramp rate of 6 °C/s
- ◆ Long-life maintenance-free LED excitation light source, high-sensitivity photomultiplier tube(PMT) and professional optical fiber ensure high-intensity and high-stability signal transmission
- ◆ Well by well scanning results in no fluorescence edge effect, and the instruments do not need ROX calibration. BFQP-96 single-channel scanning time is less than 1.5s.
- ◆ The analysis software is friendly, intuitive, concise, humanized and easy-to-operate. New experiments can be quickly created in multiple ways, and the results are automatically analyzed after the experiment.
- ◆ The report template can be customized, and supports data export in multiple formats to facilitate access to the LIMS system.
- ◆ Electric automatic hot lid, no manual operation is required.



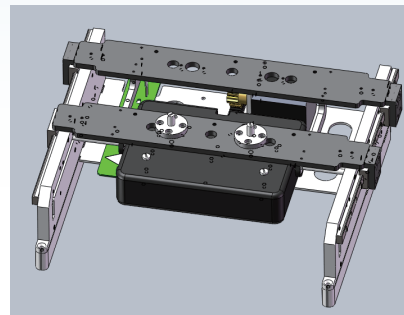
Multiple new experiment creation ways



Excellent temperature control performance

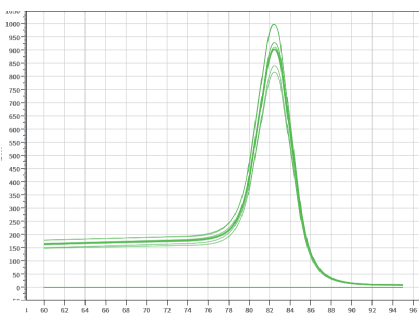


Multiple advanced functions

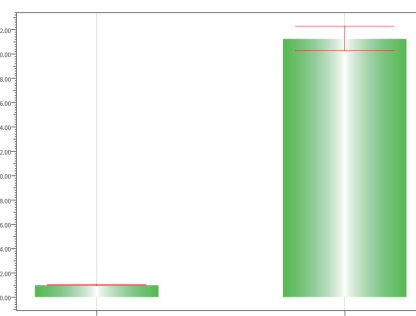


Electric automatic hot lid

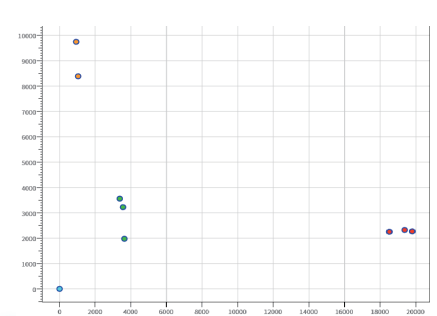
Powerful function



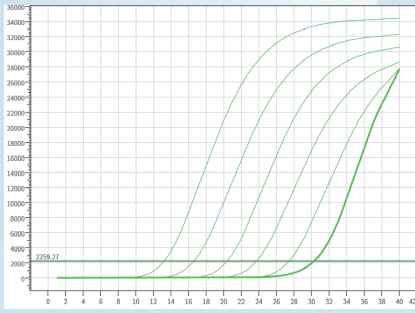
Melting curve



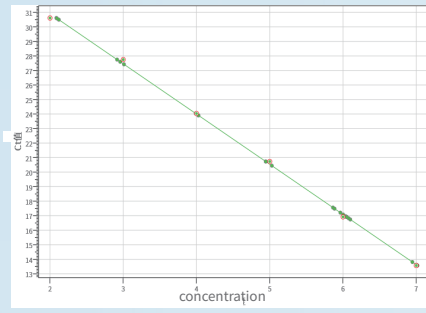
Relative quantification



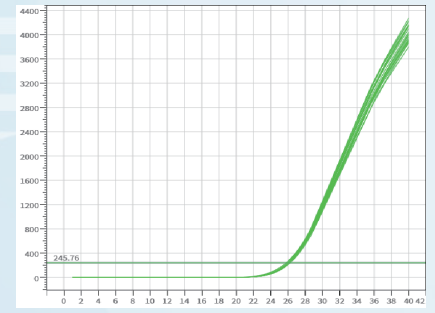
SNP



Gradient curve



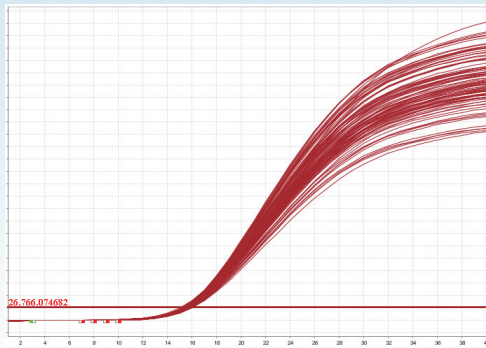
Standard curve
Related coefficient: -0.999



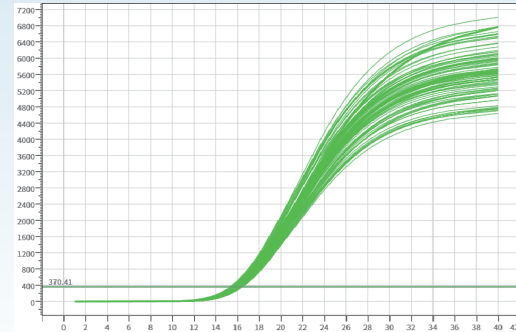
Uniformity

Experimental comparison

Prepare 5 μ L reaction system to amplify on BigFish BFQP-96 and an international famous brand qPCR instrument respectively, and compare the amplification effect and reagent evaporation.



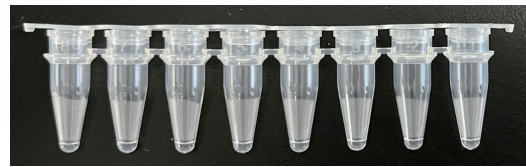
Amplification curve of a famous brand qPCR instrument



Amplification curve of BigFish qPCR instrument

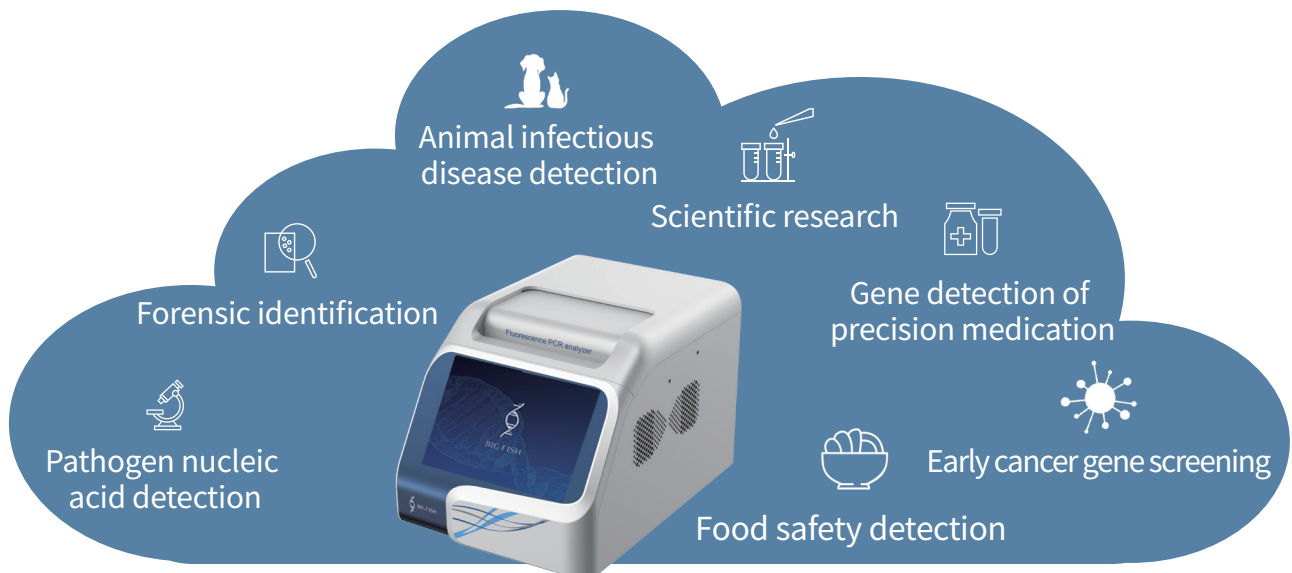


5 μ L reaction system of a famous brand qPCR instrument



5 μ L reaction system of BigFish qPCR instrument

Application scenario



Product parameter

Model	BFQP-48	BFQP-96
Sample quantity	48well×0.2ml	96well×0.2ml(optional 96-well×0.1ml)
Consumable type	0.2 mL 8-strip tubes, Single tube (the bottom should be transparent)	0.2 mL 96-well plate (Half-skirted, Non-skirted), 8-strip tubes, Single tube (the bottom should be transparent)
Reaction volume	5-100 μ L	
Dynamic range	1-10 ¹⁰ copies	
Sample repeatability	CV<1%	
Sample linear	r \geq 0.999	
Automatic hot lid	The hot lid can be controlled by touch button to automatically press the tube	
Fluorescence channel	5	
Fluorescence dyes	F1: FAM, SYBR Green I; F2: VIC, HEX, TET, JOE, TAMRA, CY3, NED; F3: ROX/TexRed; F4: CY5; F5: CY5.5;	
Excitation light source	High brightness and long life LED excitation light source	
Detector	PMT	
Excitation wavelength	Channel 1: 470nm Channel 2: 523nm Channel 3: 571nm Channel 4: 628nm Channel 5: 678nm	
Detection wavelength	Channel 1: 525nm Channel 2: 564nm Channel 3: 612nm Channel 4: 692nm Channel 5: 718nm	
Single channel scanning time	3.75s	1.5s
ROX calibration	No need	
Temp. control method	Thermoelectronic	
Ramp rate(max)	4°C/s	6°C/s
Temp. accuracy	\pm 0.1°C	
Temp. uniformity	\leq \pm 0.2°C (55°C)	
Temp. range of hot lid	RT+5°C-115°C	
Temp. gradient range	0.1-6°C(Independent temp. control)	0.1-36°C
Time increase/decrease	0~9 min59 s, Long PCR is available	
Temp. increase/decrease	0~9.9 °C, Touchdown PCR is available	
Software function	Support absolute quantitative, relative quantitative, melting curve, HRM, SNP and other functions	
Safety protection and alarm	Over heat protection and alarm for block and hot lid	
Result export data	Excel, TXT	
Software language	Chinese, English	
Voltage range	100-240V,AC.50/60Hz	
Interface mode	USB-typeB	USB2.0/HDMI
Power (max)	600W	1000W
Dimensions (D x W x H)	410×300×286mm	473×335×330mm
Net weight	13kg	26kg

Address: Building 6, Yinhu Innovation Center, No. 9 Fuxian Road, Yinhu Street, Fuyang District, Hangzhou City, Zhejiang Province.

Website: www.bigfishgene.com

Email: overseas@bigfishgene.com
Tel: +86-571-56390366